

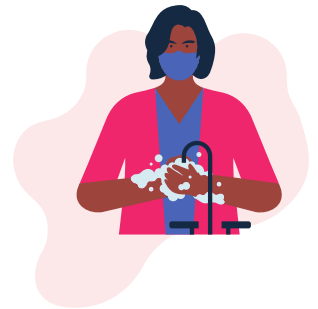
## HEALTH PRECAUTIONS



- Implementation of a **systematic control system for the health pass** from 50 visitors
- **Defined circulation paths** in common areas of the building (adapted according to events). Separate entry and exit points
- **Health protocol** for cleaning and disinfecting areas established in accordance with current standards and in compliance with environmental standards
- **Identification by QR code scan** or paper register of all people working on site for events with 1,000 visitors or more

## HYGIENE

- **100% fresh air supply** with filtration throughout the building
- Electric hand-dryers deactivated and replaced with paper towels
- Reinforced hygiene measures with **disinfection of contact points**



## PREVENTIVE MEASURES



- **Face masks are compulsory** inside the building
- **Hand-sanitiser** is available at building entrances and exits
- **Social-distancing rules** to be displayed and compliance required
- **Designated isolation area** in case of suspected symptoms
- **Appointment of a COVID-19 officer** to serve as point of contact

## CATERING

- **Catering outdoors and indoors allowed** without capacity restriction
- **Authorised cocktail**
- **Tasting** with individual servings

